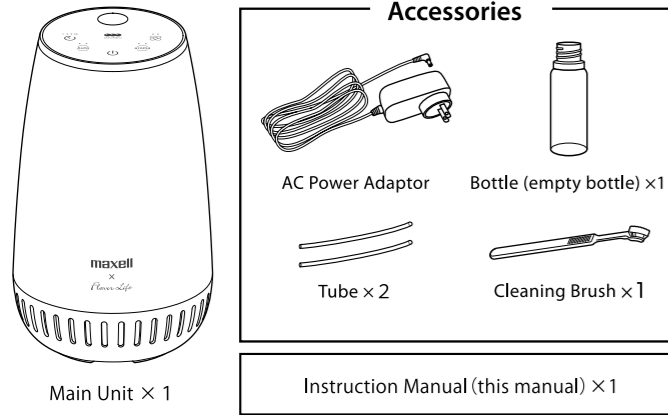


Instruction Manual

Thank you for purchasing this MAXELL product. Before use, make sure to read this Instruction Manual and use the product correctly and safely. If additional information is included in other attached documents, make sure to see it.

Confirmation of packaged items



1 Introduction

Keep the following in mind when reading the Instruction Manual

- This Instruction Manual may be subject to change without prior notice.
- In order to improve the product, external appearance or part of the specifications may be subject to change without prior notice.
- Unauthorized duplication of part or all of this Instruction Manual without permission is prohibited except for the case of personal use. In addition, do not reprint this Instruction Manual without permission.

Disclaimer

- We assume no responsibility for any damage caused by fire, earthquake, action by any third party, other accidents, customer's intention or fault, incorrect use, or use under other abnormal conditions.
- The warranty stated in the warranty certificate is all we warrant, and we do not warrant anything except for this warranty including express warranty and implied warranty.
- Maxell shall not be responsible for failure due to any damage caused by usage other than described in the instruction manual.
- We assume no responsibility for any damage caused by malfunction due to combination with connection equipment and devices.
- This product is not intended for use with equipment and devices related to human life such as medical equipment and devices, nuclear equipment and devices, aerospace equipment and devices, transportation equipment, and equipment and devices which require a high standard of reliability. We assume no responsibility if this product is used for the control systems of these types of equipment and devices and if any injury or fire occurs due to failure of the product.

2 Safety Precautions

Make sure to observe the following in order to use the product safely

- ⚠ WARNING** Indicates the degree of danger in which incorrect handling may result in death or serious injury<sup>1</sup> to a user.
- ⚠ CAUTION** Indicates the degree of danger or the state of damage in which incorrect handling may result in slight injury<sup>2</sup> to a user or damage to property<sup>3</sup>.

\*1: Severe injury is indicated by those that have after effects such as blindness, injury, burns (high temperature burns/low temperature burns), electric shock, fracture, poisoning, etc. and those requiring hospitalization or long-term regular hospital visits for treatment.

\*2: Minor injury refers to hurt, burnt, electric shock, etc. which do not result in hospitalization or long-term follow-up consultation.

\*3: Property damage refers to broad damages to houses or properties and domestic animals/pets.

Examples of Symbol	⚠	stands for caution to fire, explosion, high temperature when handling the product. Details will be illustrated inside the symbol. (e.g.: ⚠ Beware of electric shock)
	⊘	stands for prohibited actions when handling the product. Details will be illustrated inside or next to the symbol or with written description next to it. (e.g. ⊘ Do not decompose)
	●	stands for instruction which must be followed. Details will be illustrated inside or next to the symbol or with written description next to it. (e.g. ● Remove plug from socket)

**⚠ WARNING**

- Do not use the product in a place where a ventilation system is not available.
- Do not place any object within 30cm from the ozone outlet and the aroma diffuser outlet.
- Do not bring your face close to the ozone outlet and the aroma diffuser outlet.
- Select an operation mode suitable for a space in which the product is used. Confirm the recommended applicable range, and do not use the product in a space narrower than this range.  
→ See the recommended applicable range of the installation method in "4 How to use." Use of the product in an improper environment may result in a hazard to the human body or pets, and damage to property.
- Do not use the product in a place where there is any flame, oily smoke, inflammable gas or metallic dust. Otherwise, ignition or smoking may occur.
- When using or storing the product, keep it out of the reach of children. Otherwise, electric shock or injury may occur.
- When using the product in an environment where a small animal may live, pay special attention to the condition of any small animal.
- Note that items that rust easily and natural rubber will easily deteriorate if they are exposed to ozone.
- When concerned about an ozone-specific odor or feeling any change in physical condition such as a headache during use, stop use of the product and ventilate the room. Also, consult a doctor.
- A person having an existing medical condition such as asthma should consult a doctor before use.

**⚠ WARNING**

**When an abnormal condition or failure occurs**

- **Stop use of the product immediately and disconnect the AC power adaptor from the outlet**  
When smoke, abnormal odor or noise emits from the product, or when water or a foreign substance has entered inside the product, immediately stop use of the product and disconnect the power adaptor. Use of the product as it is may result in smoking, heat generation, ignition or electric shock.
- **Stop use of the product immediately at the time of dropping or breaking**  
Use of the product as it is may result in heat generation, ignition, electric shock or injury.

**Installation and use**

- **Do not use the product in a place where a ventilation system is not available**
- **Confirm the recommended applicable range, and do not use the product in a space narrower than this range**  
→ See the recommended applicable range of the installation method in "4 How to use."
- **Do not place any object within 30cm from the ozone outlet and the aroma diffuser outlet**  
Use of the product in an improper environment may result in a hazard to the human body or pets, and damage to property.
- **Do not use the product in a place where there is any flame, oily smoke, inflammable gas or metallic dust**  
It may cause ignition or smoke.
- **Do not use the product in a humid place**  
Do not use the product in a bathroom, on a beach, on a waterfront or outdoors. In addition, do not use the product in a room where a humidifier operates excessively. Otherwise, electric shock or ignition may occur.
- **Do not use the product in a place where water may be splashed over the product**  
It may cause electric shock or ignition.

**Main unit, power adaptor and USB cable**

- **Do not repair, alter or disassemble these parts**  
It may cause fire, electric shock, injury or failure.
- **Keep dry**  
Do not wet these parts with water or pour water on them. It may cause heat generation, electric shock or malfunction.
- **Do not put into a fire**  
Do not throw these parts into a fire or heat them. Otherwise, heat generation or ignition may occur.
- **Do not put these parts into a refrigerator**  
Otherwise, failure may occur.
- **Do not put these parts into a cooking appliance including a microwave oven or a high pressure container.**  
It may cause smoking, heat generation or ignition.

**When using or storing these parts, keep them out of the reach of children and animals**  
It may cause electric shock or injury.

- **Do not use these parts with wet hands**  
It may cause electric shock or malfunction.

**⚠ WARNING**

**Main Unit**

- **Take power only from the AC power adaptor**  
Use the included power adaptor. Or otherwise, it may cause in heat generation, ignition, fire, malfunction, electric shock or injury.
- **Do not insert your finger or any foreign substance (such as metal) into the ozone outlet, inlet, and aroma diffuser outlet**  
It may cause electric shock or injury.
- **Do not put drinking water, cigarette ash or flammable objects into the inside of the main unit from the ozone outlet, inlet, and aroma diffuser outlet**  
It may cause electric shock or injury.
- **Do not put drinking water, cigarette ash, flammable objects, etc. inside through the ozone outlet, air inlet port, or aroma diffuser outlet**  
It may cause electric shock or fire.
- **Do not cover the ozone outlet, inlet, and aroma diffuser outlet with a hand or an object**  
It may cause electric shock or malfunction.
- **Do not remove the bottle adaptor and the essential oil bottle during operation**  
If they are removed during operation, essential oil may blow out and contaminate the surrounding area.
- **Do not intentionally inhale the essential oil sprayed from the aroma diffuser outlet**  
Essential oils are concentrated, high-purity oils that can affect your physical condition, such as feeling sick.

**AC Power Adaptor**

- **Use only the dedicated power adaptor and USB cable**  
It may cause electric shock or fire.
- **Use these parts only with the specified voltage**  
It may cause electric shock or ignition may occur. Input power for the power adaptor of the product is AC100-240V.
- **Do not use a loosened outlet**  
Do not use an outlet which is loosened when the AC power adaptor is inserted. It may cause electric shock or fire.
- **Do not cover the power adaptor with a cloth or cover**  
It may cause heat may be trapped and the case may be deformed, resulting in electric shock or ignition.
- **Do not use a damaged AC power adaptor**  
It may cause electric shock or ignition.

**Before caring for the product, make sure to disconnect the power adaptor**  
It may cause electric shock or ignition.

**Periodically remove dust on the AC power adaptor**  
Periodically remove dirt and dust. Otherwise, humidity may cause an insulation defect, resulting in a fire.

**Make sure to disconnect the power adaptor if the product will not be used for a long time**  
It may cause insulation deterioration may result in electric shock or fire from a short circuit.

**⚠ CAUTION**

**Installation and use**

- **Do not place the product in an unstable location**  
Do not place the product on an uneven stand or on an inclined surface. Otherwise, the product may drop or fall, resulting in injury or failure. In addition, essential oil may spill or splash from the diffuser outlet, and may contaminate the surrounding area.
- **Do not place the product in a humid or dusty place**  
Do not place the product in a bathroom, near a humidifier or cooking counter or in a dusty place. It may cause fire or electric shock.
- **Do not place the product near a TV set or radio**  
It may cause image distortion or noise.
- **Do not place the product in direct sunlight or in a place with abnormally high temperatures**  
Otherwise, the surface of the device and parts may deteriorate, and additionally, heat generation or ignition may occur. Do not place the product in a closed vehicle, in direct sunlight or near a heating appliance such as a stove.
- **Do not turn on the product when condensation occurs on the product**  
A rapid change in environmental temperature may result in condensation inside the product. When condensation occurs, leave the product for a while with the power off.

**Talk to your veterinarian if using the product in an environment with pets**  
The effects of essential oils vary depending on the type of pet, so please check before use.

**Install in a location where essential oils do not come into direct contact with walls, furniture, appliances, curtains, clothing, etc**  
The sprayed essential oil may dissolve the paint or cause stains.

**Bottle**

- **Do not drop, give impact or apply excessive force to the bottle**  
Otherwise, the bottle may be damaged, resulting in injury.

**Maintenance**

- **Do not use chemicals**  
When wiping the main unit, do not use benzine, thinner or alcohol, etc. In addition, do not use an electrical contact cleaner. Otherwise, the exterior may be damaged and parts may dissolve.

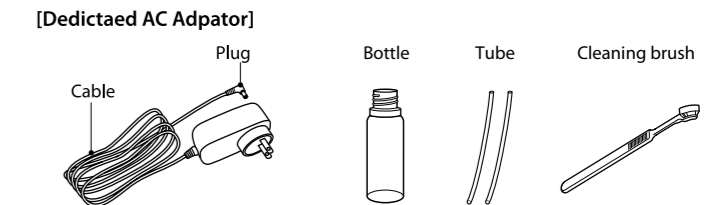
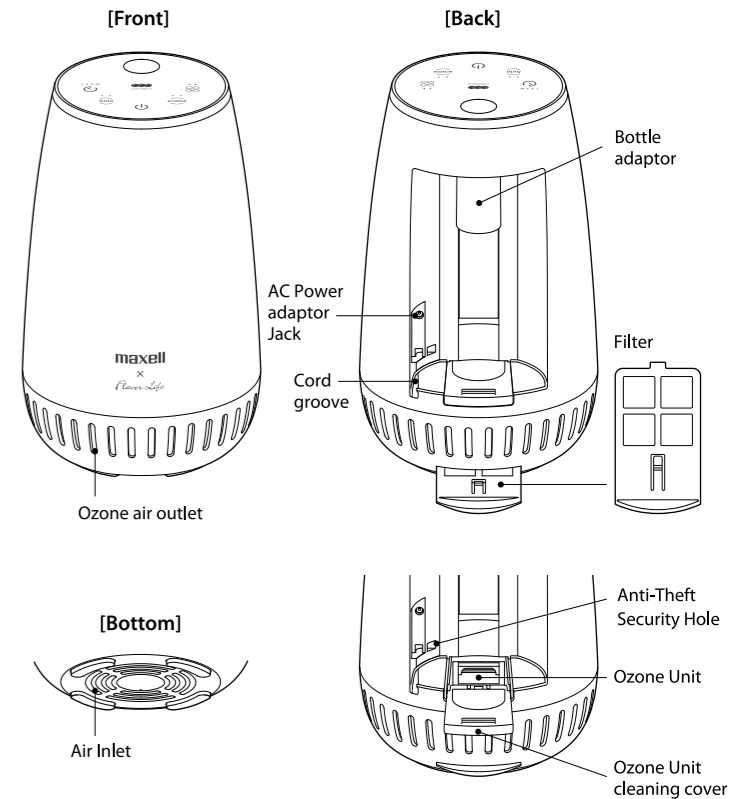
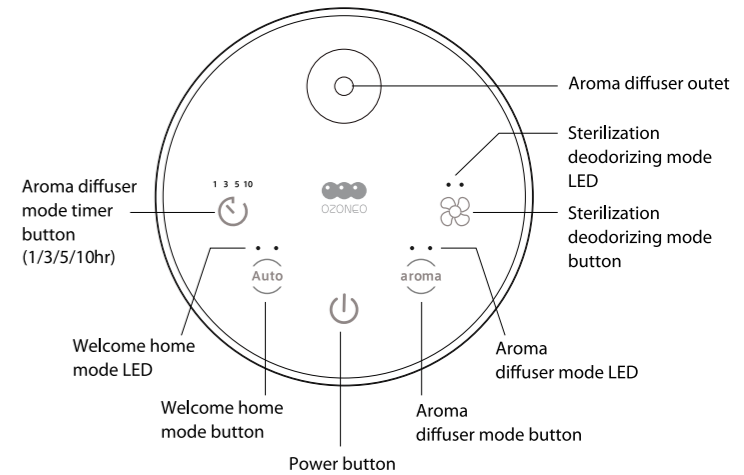
**⚠ CAUTION**

- **When removing the bottle adaptor, make sure to remove the AC power adaptor in advance.**  
If you unplug the bottle adapter while the AC adapter is plugged in, the cord may strike your hand and cause injury.

3 Name of Each Part

[Control Panel] : The button light up when the power is turned on.

\*The illustration of the operation part is for explanation only and may different from the actual appearance.



## 4 How to Use

When using this product, please read this manual carefully and handle it correctly.

### [Recommended Applicable Range]

Confirm the area of a room where this product is to be used before installation. Use the product only in the recommended applicable range.

Sterilization deodorizing mode	: 1.65~33m <sup>2</sup> ※1※2 (Low: 1.65~10m <sup>2</sup> / Mid:10~23m <sup>2</sup> / High: 23~33m <sup>2</sup> )
Aroma diffuser mode	: 10~66m <sup>2</sup> ※2 (Low: approx. 10m <sup>2</sup> / Mid: approx. 23m <sup>2</sup> / High: approx. 66m <sup>2</sup> )

### [Safety conditions for sterilization deodorizing mode setting]

- The recommended coverage shown above is based on our test results, the space concentration of ozone is set as 0.05 ppm or less. Please follow the recommended coverage while using the main unit.
- Please do not use in a place which cannot be ventilated.
- The above recommended coverage is only for one main unit. Do not use it as a guide for multiple units.
- Please use at least 30cm away from the air-outlet. (Please do not place objects within 30cm from the air-outlet.)
- Ozone may smell and it is normal. In rare cases, you may feel uncomfortable such as headache due to individual differences even the ozone concentration is below the environmental standard 0.06 ppm. In that case, stop using immediately and ventilate. (See Table 1 for ozone concentration and its effect on the human body)
- For other precautions, please read this user manual thoroughly.

Table 1

Ozone Concentration(ppm)	Effect
0.01	Sensitive people could feel the smell of ozone
0.02	Feel the smell of ozone (will get used to it)
0.06	Environmental standard concentration of photochemical oxidant (Ministry of the Environment Government of Japan)
0.1	Feels strong ozone odor, irritates nose and throat Tolerable concentrations in the working environment (Japan Society for Occupational Health)

\* Refer to Japan Ozone Association Ozone Handbook

Based on internal test results

- ※ 1: The result is confirmed under the condition of ventilation rate (0.5 times / hour) in the living room of the house conforming to the Building Standards Law of Japan. (0.5 times / hour means that 1/2 of air in the room is replaced in one hour.)
- ※ 2: The effect of use depends on the using environment such as temperature and humidity, using time, and using space.

### Use of Essential Oil

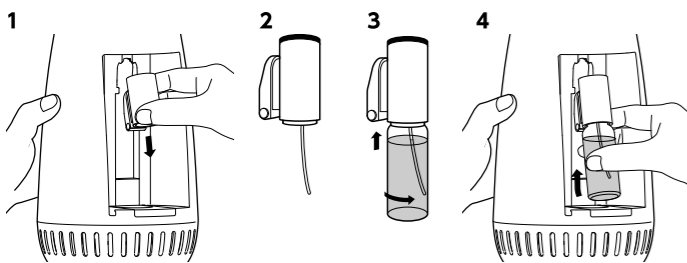
- Make sure to use essential oil of the corresponding natural plant constituent 100%. (See the table below.) Do not use aroma oil containing perfume or synthetic perfume. Use an undiluted solution of essential oil.
- Essential oil is concentrated and highly purified oil. Please handle with care. For the handling of essential oil, please read the instruction manual of the essential oil to be used.
- Essential oil may dissolve plastics and coatings on furniture or leave stains if spilled.
- Children and pets are sensitives to scents. Please do not use it in a room with children and pets.
- Sprayed essential oil may affect pets. When using the product in an environment with pets, consult a veterinarian before use.

Corresponding essential oil (Produced by Flavor Life Co., Ltd.)	
Oil name	Model No.
Citrus Clear	BOZAR 01971
Herbal Refresh	BOZAR 01972
Floral Relax	BOZAR 01973

### [How To Install The Essential Oil Bottle]

1. Remove the bottle adaptor from the main unit.
2. Install the tube to the bottle adaptor.
3. Remove the cap and the dropper of the essential oil bottle used, and install the bottle to the bottle adaptor. At this time, securely install the bottle so as to prevent looseness. In addition, confirm that the tube has not slipped off, and set so that the tube reaches the bottom of the essential oil bottle.
4. Install the bottle adaptor to the main unit.

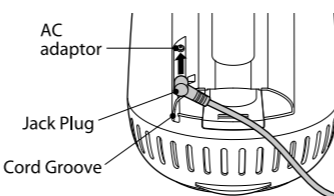
- ※ Do not tilt the main unit with the essential oil attached. The essential oil will spill.
- ※ When removing and installing the bottle adaptor, do not connect the AC adaptor to the main unit.
- ※ When essential oil adheres to the main unit, or power adaptor immediately wipe it off.



### [How to connect]

1. Connect the plug of the AC power adapter to the AC adapter jack on the back. Pass the cord through the cord groove on the back.
2. Plug the AC power adapter into an outlet.

※ When the main unit connected to the power, it makes a beeping sound, but this is not a malfunction.



### [How to operate]

After turning on the power of this product, modes can be switched to your favorite operation mode by pressing each mode button. After turning on the power, it starts in aroma diffuser mode (Low), set for 1 hour.

\* If the ozone unit cleaning cover is not installed correctly, the power will not turn on.

\* If you do not operate the buttons while operating and about 5 minutes have passed, all LED and button will automatically dim. When you press the button again, all LED and button will return to their original brightness.

### ● About Aroma diffuser mode

Aroma diffuser mode	Low → Mid → High
Aroma diffuser mode LED	

Each time you press the button, the aroma diffuser mode is switched.

• The aroma diffuser mode allows for timer setting (1h/3h/5h/10h)

Aroma Timer	1 hr → 3 hr → 5 hr → 10 hr
Timer indicator	

When the aroma diffuser mode is set, press the aroma timer button to switch the timer time setting. Please set your preferred time setting.

\* The timer can be set only in the aroma diffuser mode.

\* Continued operation with no essential oil may cause a malfunction.

\* The timer display changes when the remaining time is less than 1 hour, 3 hours, or 5 hours indicated by the timer.

Aroma timer remaining time	Less than 1 hour	1~3hrs	3~5hrs	5~10hrs
Timer indicator				

### ● About the sterilization deodorizer mode

Sterilization deodorizing mode	Low → Mid → High
Sterilization deodorizing LED	

Each time you press the sterilization deodorizing mode button, the sterilization deodorizing mode changes.

The sterilization deodorizing mode is for continuous operation only.

\* If the operation becomes unstable due to dirt on the ozone unit, the power button, each mode button, and LED will turn off and the operation will stop.

### ● About welcome home mode

By using the welcome home mode when you go out, you can automatically switch between the sterilization deodorizing mode and the aroma diffuser mode, and you will be greeted with the aroma scent after returning home.

Welcome Home Mode	1 → 2
Operating Specifications	Sterilization deodorizing mode : Mid Diffuser mode : Mid
Welcome Home Mode LED	

Each time you press the welcome mode button, the mode will change. The welcome home mode has only 1 hour operation in aroma diffuser mode after 11 hours operation in sterilization deodorizing mode. Timer cannot be set.

\* Continued operation with no essential oil may cause a malfunction.

## ! WARNING

- Do not use the product in a place where a ventilation system is not available.
- Use the product according to the area of the room.
- When using the product in an environment with pets, consult a veterinarian before use.
- If the product is not used for a long period of time, disconnect the AC adaptor, remove the essential oil, and store it.

## 5 Maintenance and Storage

It depends on the usage environment, but it is recommended cleaning once or twice a month.

### Before maintenance

You must ensure that the unit is switched off before any maintenance is carried out. Unplug the AC adaptor from the wall socket and disconnect the plug from the main unit.

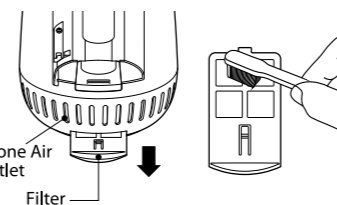
### [Main Unit]

Remove any dirt from the unit using a cloth dampened with water or detergent (neutral PH). Then wipe down gently with a dry cloth. Do not use any cleaner containing benzene, thinner or alcohol. Please also remove dust accumulated in the air outlet too.

### [Filter]

Pull out the filter under the ozone outlet on the back and remove it. Gently wipe the surface of the filter with a brush to remove dust. After cleaning, attach the filter securely.

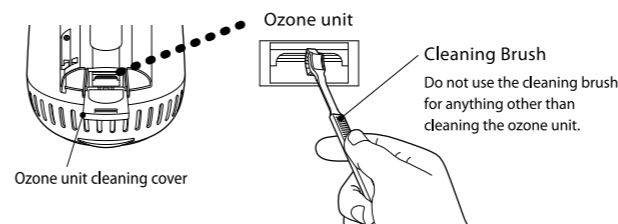
\* Please do not forget to attach the filter. It may cause a malfunction.



### [Ozone unit]

Remove the ozone unit cleaning cover and gently wipe the ozone unit with a cleaning brush. After cleaning, securely attach the ozone unit cleaning cover. ※ If the ozone unit is very dirty, soak a small amount of water in the cleaning brush to remove the dirt. After removing the dirt, dry it well.

If the operation becomes unstable due to dirt on the ozone unit, the power button, each mode button, and LED will turn off and the operation will stop.



## ! WARNING

- Be careful not to pinch or injure your fingers when removing or installing parts.
- Be careful not to damage the ozone unit.
- Securely attach the ozone unit cleaning cover and filter. If it is not attached properly may cause malfunction or failure.
- Be careful not to break the filter.

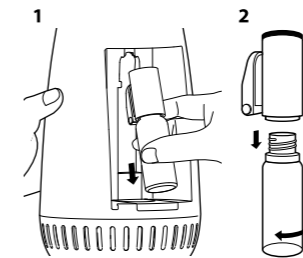
[Maintenance For The Bottle Adaptor And Tube (Maintenance is also recommended when the type of essential oil is changed.)]

We recommend you maintain for the bottle adaptor and the tube once or twice a month depending on the operating conditions.

Maintenance is also recommended when the type of essential oil is changed.

### [Maintenance Procedures]

1. Remove the bottle adaptor.
  2. Remove the essential oil bottle from the bottle adaptor.
  3. Pour ethanol into the included empty bottle, and install it to the bottle adaptor.
    - ※ Use commercial "ethanol for disinfection." Pour ethanol up to about 1/5 of the empty bottle as a reference.
  4. Connect the power adaptor, and operate the product in the aroma diffuser mode (High) for 1 hour.
  5. Remove the empty bottle after completion.
  6. If sticky build-up occurs around the aroma diffuser outlet, wipe it out.
  7. Attach the essential oil to be used, connect the plug of the AC adaptor to the main unit, and then connect the AC adaptor to the outlet before use.
- ※ Aroma may remain around the aroma diffuser outlet even after cleaning.  
 ※ When changing the type of the essential oil, you are recommended to purchase a new bottle adaptor.



## ! CAUTION

- Be careful not to pinch your hands or fingers when attaching the rear panel.
- Be careful not to spill essential oil when removing or installing parts.
- Leaving it for a long time without cleaning may cause clogging. In addition, it may cause dripping when used, so clean it regularly.
- If you feel the scent is weak, purchase a new bottle adaptor.

## 6 Troubleshooting (If failure is suspected, check the following)

Phenomenon	Cause	Solution
The product does not operate. (Power button, each mode button, LED does not light up)	Power is not turned on	Use the included AC power adaptor Connect the AC adaptor plug securely Connect the AC adaptor to electrical outlet securely
	The ozone unit cleaning cover has come off	Securely attach the ozone unit cleaning cover
	The ozone unit is dirty	Clean the ozone unit. See ⇒ 5 [Maintenance]
Cannot feel the deodorizing effect. (Cannot feel the ozone smell) (Sterilization deodorizing mode)	The air outlet or air inlet is blocked	Remove the block or object from the air outlet or air inlet
	Filter or Ozone generator unit is dirty	Clean the filter and ozone unit. See ⇒ 5 [Maintenance]
	Strong source of odor exists	Remove the source of the odor (if the source emits strong odor all the time, may not feel the deodorant effect)
Aroma is not produced. Aroma is weak. (Aroma diffuser mode)	The bottle adaptor is not correctly set	Install the bottle adaptor correctly and securely. ⇒ See 4 [How to install the essential oil bottle]
	The tube for the bottle adaptor has slipped off	Install the tube to the bottle adaptor correctly and securely. ⇒ See 4 [How to install the essential oil bottle]
	The tube for the bottle adaptor is dirty	Maintenance is needed. ⇒ See 5 [Maintenance]. If the condition is not improved even after maintained, replace the bottle adaptor and the tube
	There is no essential oil	Refill essential oil ⇒ See 4 [How to install the essential oil bottle]

## 7 Specifications

### [Main Unit]

Input Voltage/ Current	: DC12V/ 1.2A
Dimensions	: W142 x D142 x H234 mm
Weight	: Approx. 800g (not including an aroma bottle)
Ozone Generation	: Max.5mg/h
Power Consumption	: Max. 5W
Operating Temperature	: 5~ 40°C (no water-drop condensation)
Range:	

### [Dedicated AC Power Adaptor]

Input	: AC100-240V 50/60Hz
Output	: DC12V/ 1.2A
Cable length	: Approx.1.8m

※ Effectiveness of deodorant, sterilization, virus inactivation are described on the following site.

[https://www.maxell.jp/consumer/mxap-fae275\\_01.html](https://www.maxell.jp/consumer/mxap-fae275_01.html)

(The effect may vary depends on the usage surrounding and the usage time.)

※ Not all kinds of bacteria, viruses and odors are guaranteed to be effective.

※ This product is not designed for dust collection.

■ When disposing of this product, follow the instructions (local regulations) of each local government.

### Maxell, Ltd.

30-13 Motoyoyogi-Cho, Shibuya-Ku, Tokyo 151-8527

<http://www.maxell.co.jp>