



llexam



llexam

Break through the conventions of home beauty, with products full of exciting futuristic surprises.

Our products blend a capacity for linking unique analog core technology with the latest digital technologies and an ability to connect people.

Maxell brings these strengths to Future Amenity comfort with its new beauty brand, connecting people for a brilliant satisfying experience.

llexam is born to deliver products containing essential functions and features with visionary eco-friendly designs.



The light your hair
has never seen before —

Luminous Hair Dryer MXHD-3000

Just like turning the spotlight on your hair, the Luminous Hair Dryer features a brand new cutting-edge design—a lamp unit hair drying system (patent pending) that uses the energy of light to dry hair gently.

Change the way you dry hair: A new standard for hair dryers

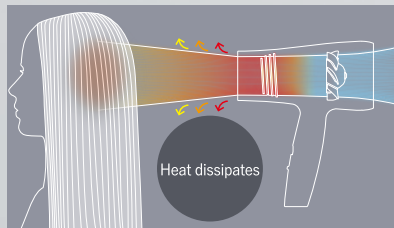
The Luminous Hair Dryer introduces a new method of hair drying unlike any method used by the conventional dryers* of the past.

By utilizing the energy of light, this new design dries hair without completely drying it out, something conventional hair dryers could not achieve. With Ilexam, Maxell introduces a whole new way of caring for your hair.

* Using dryer equipped with a heater

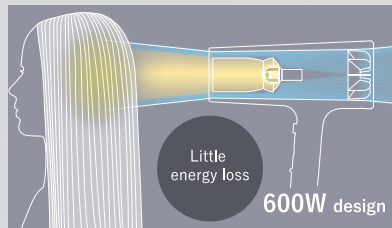


[Conventional hair dryer]



Heat mixes with room air, which causes irregularities in the temperature of the air hitting the hair and tends to overheat sections of the hair.

[Luminous Hair Dryer]



Light travels in a straight line, transferring heat evenly and drying hair gently to cause less damage. At 600W, the lighting technology conserves energy, as well.



Hydrate hair while drying it — a new way to care for hair

The light dryer leaves sufficient moisture inside hair, keeping it hydrated and healthy as it dries.

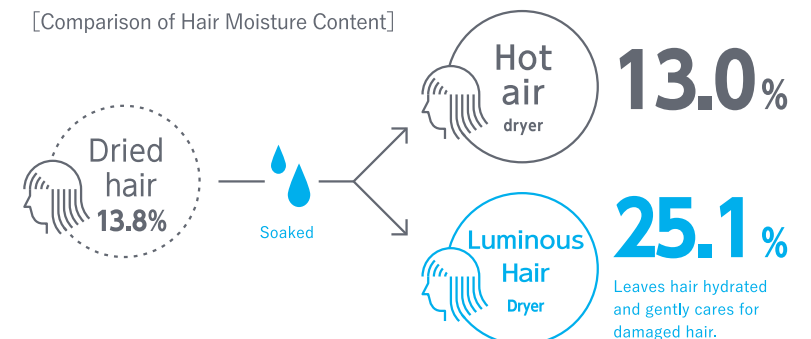
Conventional dryers tend to over-dry* by taking in outside air and blowing it onto hair.

Unlike conventional methods, the Luminous Hair Dryer seals in moisture as it dries, leaving hair sleek, smooth, and shiny.

* Leaves hair without sufficient moisture after dry.

To test performance, dried hair with a moisture content of 13.8% was soaked in water. When the wet hair was dried with a hot air dryer, moisture dropped to 13.1%. However, hair dried with the Luminous Hair Dryer had a moisture content of 25.1%. Leaving 1.9 times more moisture in hair than hot air dryers, the Luminous Hair Dryer dries without over-drying.

[Comparison of Hair Moisture Content]



Testing

Two sections of washed hair were soaked in warm water for three minutes and towel dried. Each section was then dried for 20 minutes, one with a hot air dryer and one with the Luminous Hair Dryer. Moisture content was then measured with an infrared aquameter. Testing done by SOUKEN.



Nano-ions for
silky, shiny hair

Nano-Ion Dryer MXHD-1000

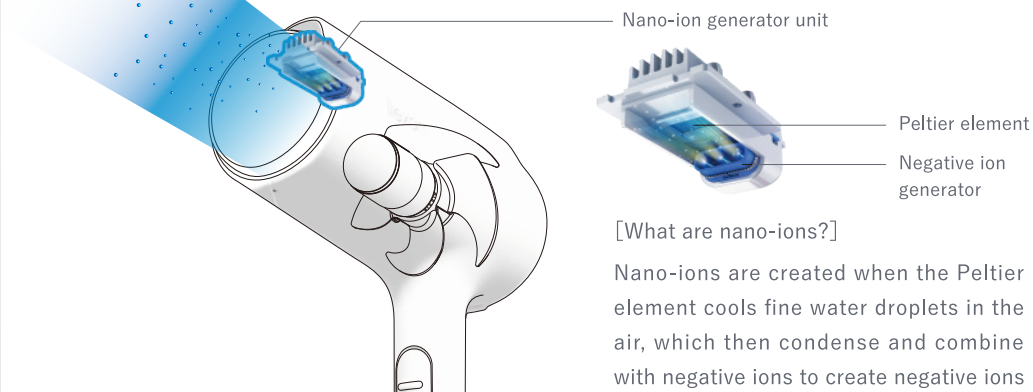
Nano-ions leave hair smooth and glossy.
Maxell's unique driver unit generates numerous
nano-ions to envelop hair as it dries.



> Heat selector switch
HOT/MID/COOL

> Strength selector switch
HIGH/LOW

Maxell Nano-Ion Generating Unit

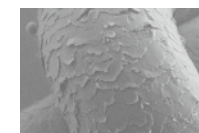


[What are nano-ions?]

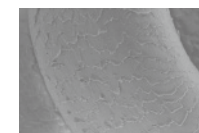
Nano-ions are created when the Peltier element cools fine water droplets in the air, which then condense and combine with negative ions to create negative ions with even higher moisture content.

The Nano-Ion Effect

Nano-ions neutralize the positive charge of hair that has accumulated static electricity while adding fine water droplets to hydrate, leaving hair sleeker and gently caring for hair and scalp.



Without nano-ions
Hair cuticle peels, and hair tends to lose moisture and protein.



With nano-ions
Moisture penetrates outer layer of the hair shaft, leaving the cuticle smooth and fizz-free.

Testing

We measured the damage to the hair cuticle from brushing hair 500 times while drying with the nano-ion dryer and a conventional dryer.
Testing conducted by Maxell.

1.6mi
minute

Dryer on high speed

With 1.6m³/minute speed, the user can quickly dry the hair.

3levels
x
2levels

Heat and speed selector switches

Allowing for three levels of heat and two levels of speed, the user is able to select the right combination for their hair type and purpose.



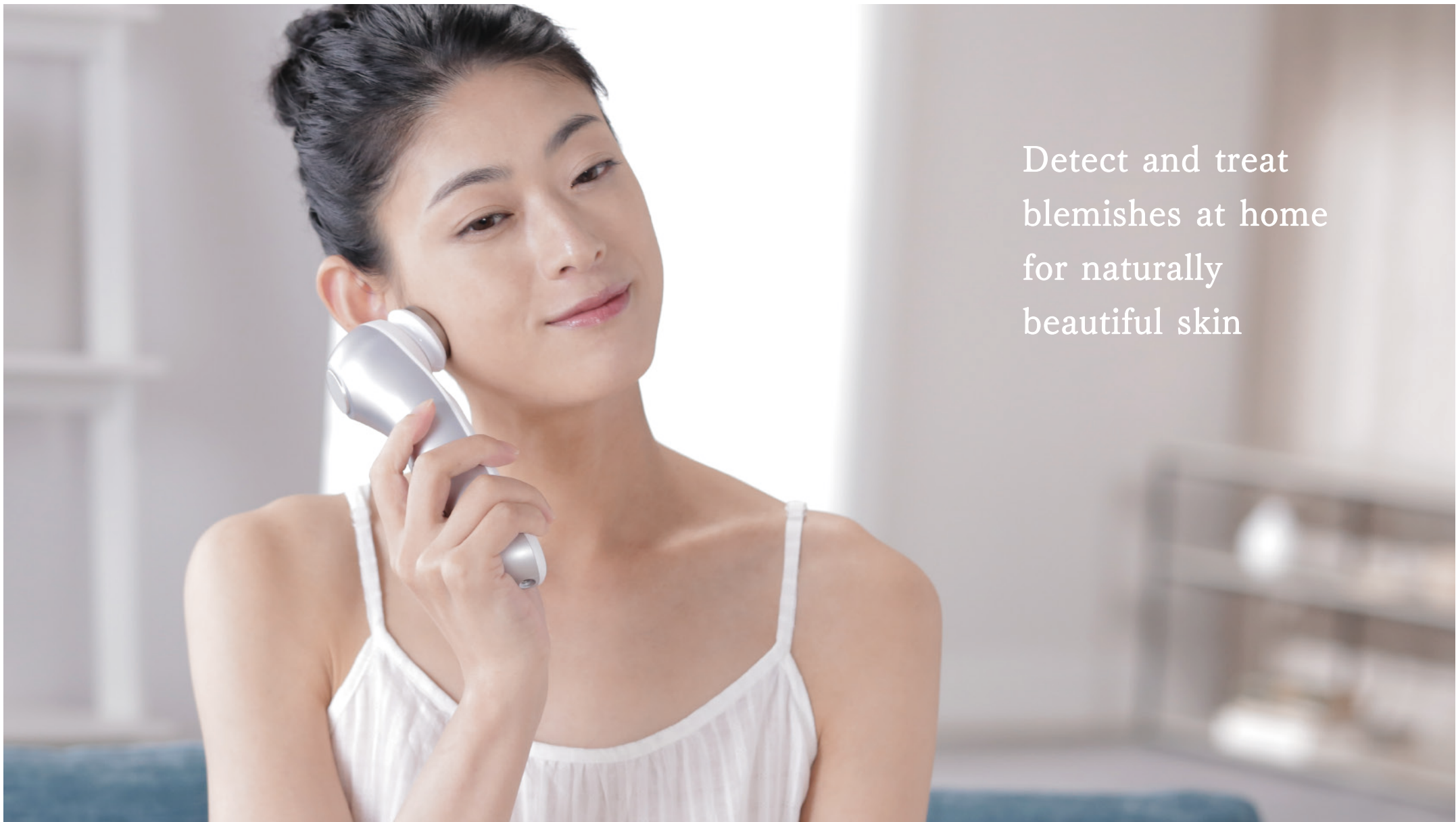
Far infrared grill

The nozzle is equipped with ceramic coated far infrared grill.



Double filter design

The double filter prevents dust from getting into the unit. The rear cover is removable for easy maintenance.



Detect and treat
blemishes at home
for naturally
beautiful skin

Multi-Mode Hot/Cold Facial System MXFC-1000

Introducing a multifunctional hot/cold facial treatment system with four modes of skin care. The simple, easy-to-use design makes keeping up with skincare easy. The “spot detector” function locates blemishes and lets you know where extra treatment is needed with a change in vibration intensity.

> Thermal head
(made of titanium)

> Spot detector

> Cooling head
(made of aluminum)



> Mode selector button > Power switch

> Level selector button > Rear plate
(made of titanium)

Facial Skincare

Place the wand head gently against the skin, slowly moving the wand away from the center of the face.



For the best results, start the facial with the cheeks (1) and (2), move onto the T-zone (3), and finally the jaw, neck, and chest (4).



Detecting Blemishes

In MOIST Mode, the wand offers five different levels of vibration intensity to indicate that a blemish or other spot has been detected.

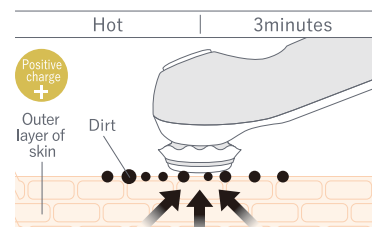
* The wand will also react to moles, bruises, and other dark areas of the skin. * The wand cannot detect blemishes when cotton is attached. * Spot detector is not intended for diagnosis or treatment of skin conditions.

Four Skin Care Modes

1. CLEANSING Mode

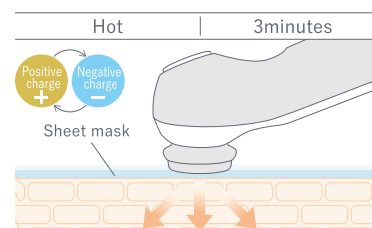
Uses ions* to remove fine dirt left in pores after the face is washed.

* Utilizes the difference between positive and negative charges.



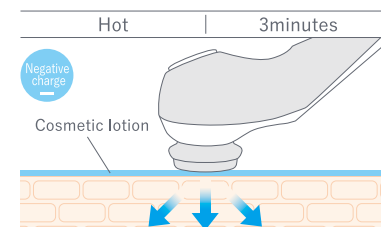
3. MASK Mode

Delivers micro vibrations and switches between charges to enhance the benefits of moisturizing lotion and sheet masks.



2. MOIST Mode **Spot detector**

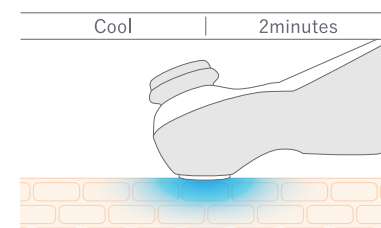
Helps cosmetic moisturizers penetrate the outer layers of skin to deeply moisturize.



4. COOL Mode

Firms skin with soothing cooling effect.

* Does not use moisturizing lotion.



Ilexam brand line up



Luminous Hair Dryer

Model number	MXHD-3000
Input voltage	AC100V 50/60Hz
Power consumption	600W
Color	White
Dimensions	W23.5×H22.3×D9.0cm
Weight	Approx. 920 g (including cord)
Cable length	2.7m
Switches	DRY/SET/COOL/COOL Shot Switch
Accessories	None

* Product specs are subject to change without prior notice.



Nano-Ion Hair Dryer

Model number	MXHD-1000
Input voltage	AC100V 50/60Hz
Power consumption	1200W
Color	White
Dimensions	W19.8×H24.0×D9.0cm
Weight	Approx. 670 g (including cord)
Cable length	2.7m
Switches	Temperature switch: HOT/MID/COOL Strength switch: HIGH/LOW
Accessories	Set nozzle

* Product specs are subject to change without prior notice.



Multi-Function Hot/Cold Facial System

Model number	MXFC-1000
Input voltage	AC100-240V 50/60Hz
Power consumption	Approx. 8W (AC100V when charged)
Color	White
Dimensions	W5.2×H17.9×D6.7cm
Weight	Approx. 200 g
Accessories	Power adaptor, cotton ring (2), protective cap

* Product specs are subject to change without prior notice.

- * Names, logos, and service marks in this pamphlet are registered trademarks or trademarks of Maxell or other corporate entity.
- * Specs and designs for products in this pamphlet are subject to improvement without notification.
- * Actual product may differ from product photos and illustrations in the pamphlet.
- * Catalog content is current as of October 2020.

Contact _____

Maxell Contact Us Search <http://www.maxell.co.jp>