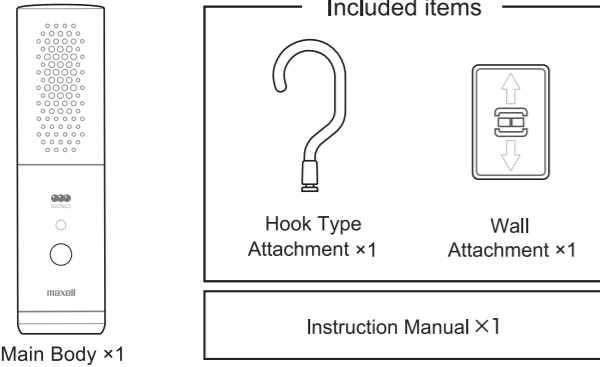


Anti-Bacterial Deodorizer
MXAP-AR50

Instruction Manual

Thank you for purchasing this MAXELL product. Before use, make sure to read this Instruction Manual and use the product correctly and safely. If additional information is included in other attached documents, make sure to see it.

Confirmation of packaged items



1 Introduction

Keep the following in mind when reading the Instruction Manual.

- This Instruction Manual may be subject to change without prior notice.
- In order to improve the product, external appearance or part of the specifications may be subject to change without prior notice.
- Unauthorized duplication of part or all of this Instruction Manual without permission is prohibited except for the case of personal use. In addition, do not reprint this Instruction Manual without permission.

Disclaimer

- We assume no responsibility for any damage caused by fire, earthquake, action by any third party, other accidents, customer's intention or fault, incorrect use, or use under other abnormal conditions.
- We assume no responsibility for any damage caused by any usage not described in this Instruction Manual.
- We assume no responsibility for any damage caused by malfunction due to combination with connection equipment and devices.
- This product is not intended for use with equipment and devices related to human life such as medical equipment and devices, nuclear equipment and devices, aerospace equipment and devices, transportation equipment, and equipment and devices which require a high standard of reliability. We assume no responsibility if this product is used for the control systems of these types of equipment and devices and if any injury or fire occurs due to failure of the product.

Influence of ozone on human body

Ozone concentration (ppm)	Influence
0.01	Person who has a sensitive sense of smell senses ozone odor.
0.02	Senses ozone odor (acclimates after a while).
0.06	Environmental baseline concentration of photochemical oxidant (Japan Ministry of the Environment)
0.1	Senses strong ozone odor. Irritation to nose and throat. Acceptable concentration in working environment (Japan Society for Occupational Health)

*With reference to the ozone handbook of the Japan Ozone Association
※Ozone concentration of the product is designed to be 0.06ppm or less.
(When the product is used in a space described in the recommended applicable range of the installation method in "E How to use.")

2 Safety Precautions

Make sure to observe the following in order to use the product safely.

WARNING	Indicates the degree of danger in which incorrect handling may result in death or serious injury*1 to a user.
CAUTION	Indicates the degree of danger or the state of damage in which incorrect handling may result in slight injury*2 to a user or damage to property*3.

- *1: Serious injury means injury with aftereffects such as loss of sight, burns, electric shock, bone fracture or poisoning and injury which requires hospitalization or long-term hospital visits for medical treatment.
- *2: Slight injury means injury, burns, or electric shock which does not require hospitalization or long-term hospital visits for medical treatment.
- *3: Damage to property means consequential damage related to house, household goods and livestock or pets.

Examples of Symbol		Symbol prohibits an action in handling of the product. Specific prohibited content is shown in or near the symbol by picture or words. (Example: Do Not Disassemble)
		Symbol forces a user to perform an action based on the instruction in handling of the product. Specific content forced is shown in or near the symbol by picture or words. (Example: Disconnect a plug from the outlet.)

WARNING

- Do not use the product in a place where a ventilation system is not available.
- Do not place any object within 30cm from the ozone outlet.
- Do not bring your face close to the ozone outlet.
- Confirm the recommended applicable range, and do not use the product in a space narrower than this range.
→ See the recommended applicable range of the installation method in "E How to use." Use of the product in an improper environment may result in a hazard to the human body or pets, and damage to property.
- Do not use the product in a place where there is any oily smoke, inflammable gas or metallic dust. Otherwise, ignition or smoking may occur.
- When using or storing the product, keep it out of the reach of children. Otherwise, electric shock or injury may occur.
- When using the product in an environment where a small animal may live, pay special attention to the condition of any small animal.
- Note that items that rust easily and natural rubber will easily deteriorate if they are exposed to ozone.
- When concerned about an ozone-specific odor or feeling any change in physical condition such as a headache during use, stop use of the product and ventilate the room. Also, consult a doctor.
- A person having an existing medical condition such as asthma should consult a doctor before use.

WARNING

Device

- Do not repair, modify or disassemble. It may cause fire, electric shock or injury.

• **Keep dry**
Do not wet these parts with water or pour water on them. Otherwise, heat generation, electric shock or failure may occur.

• **Do not put into a fire**
Do not throw these parts into a fire or heat them. Otherwise, heat generation or ignition may occur.

• **Do not use these parts with wet hands**
Otherwise, electric shock or failure may occur.

• **Do not place the product in direct sunlight or in a place with abnormally high temperatures**
Otherwise, the surface of the device and parts may deteriorate, and additionally, heat generation or ignition may occur. Do not place the product in a closed vehicle, in direct sunlight or near a heating appliance such as a stove.

• **Do not touch any leaked liquid**
If liquid leaked from the main unit comes into contact with eyes, wash with clean water without rubbing and seek immediate medical attention. It may cause blindness etc.

• **Do not put these parts into a refrigerator**
Otherwise, failure may occur.

• **Do not put these parts into a cooking appliance including a microwave oven or a high pressure container**
Otherwise, smoking, heat generation or ignition may occur.

• **When using or storing these parts, keep them out of the reach of children and animals**
Otherwise, electric shock or injury may occur.

• **Do not insert your finger or any foreign substance (such as metal) into the ozone outlet**
Otherwise, electric shock or injury may occur.

• **Do not put drinking water, cigarette ash or combustible objects into the inside of the main body from the ozone outlet**
Otherwise, electric shock or ignition may occur.

• **Do not cover the ozone outlet with a hand or an object**
Otherwise, electric shock or failure may occur.

WARNING

About batteries

- To prevent heat generation, leakage, and rupture of batteries; observe the followings (Cause of injury, malfunction, surrounding contamination)
- Be sure to follow any safety instructions displayed on batteries.
- Use batteries within the recommended usage date
- Check the (+) (-) terminals and insert it correctly.
- Periodically inspect for liquid leaks.
- When not using for an extended time, be sure to remove the batteries and store them in a safe place.
- When replacing the batteries, ensure all four new batteries are the same type of batteries
- Do not use different types of batteries or mix new batteries and old batteries together.

When an abnormal condition or failure occurs

- **Stop use of the product immediately when an abnormal condition or failure occurs, remove the battery from product**
When smoke, abnormal odor or noise emits from the product, or when water or a foreign substance has entered inside the product, immediately stop use of the product and remove the battery from the device.
- Use of the product as it is may result in smoking, heat generation, ignition or electric shock.
- **Stop use of the product immediately at the time of dropping or breaking**
Use of the product as it is may result in heat generation, ignition, electric shock or injury.

Installation and use

- **Do not use the product in a place where a ventilation system is not available**
- **Confirm the recommended applicable range, and do not use the product in a space narrower than this range**
→ See the recommended applicable range of the installation method in "E How to use."
- **Do not place any object within 30cm from the ozone outlet and the aroma spraying port**
Use of the product in an improper environment may result in a hazard to the human body or pets, and damage to property.
- **Do not use the product in a place where there is any flame, oily smoke, inflammable gas or metallic dust**
Otherwise, ignition or heat generation may occur.
- **Do not use the product in a humid place**
Do not use the product in a bathroom, on a beach, on a waterfront or outdoors. In addition, do not use the product in a room where a humidifier operates excessively. Otherwise, electric shock or ignition may occur.
- **Do not use the product in a place where water may be splashed over the product**
Otherwise, electric shock or ignition may occur.

Maintenance

- **When maintaining, be sure to remove the battery holder from the device.**
It may cause electric shock or injury.

CAUTION

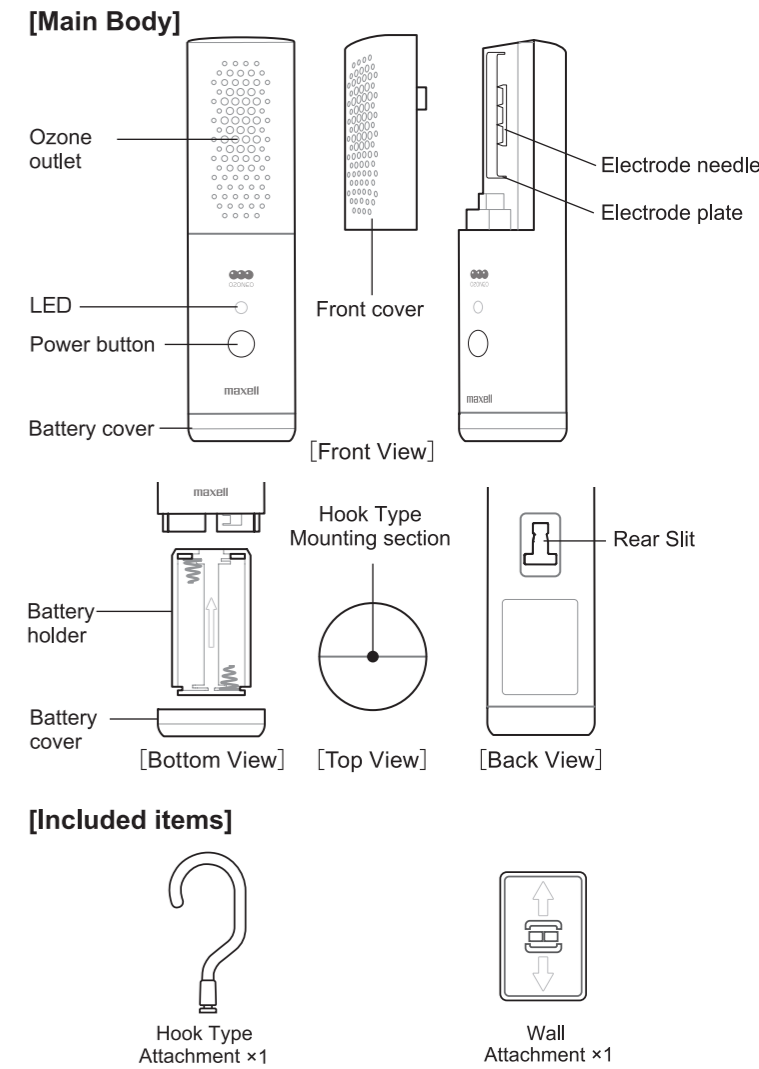
Installation and use

- **Do not place the product in an unstable location**
Do not place the product on an uneven stand or on an inclined surface. Otherwise, the product may drop or fall, resulting in injury or failure. In addition, essential oil may spill or splash from the spraying port, and may contaminate the surrounding area.
- **Do not place the product in a humid or dusty place**
Do not place the product in a bathroom, near a humidifier or cooking counter or in a dusty place. Otherwise, heat generation, ignition or electric shock may occur.
- **Do not turn on the product when condensation occurs on the product.**
A rapid change in environmental temperature may result in condensation inside the product. When condensation occurs, leave the product for a while with the power off.
- **Use within the temperature range of 5 to 40 ° C**
Use of product at temperatures outside of the recommended range may cause malfunction.
- **When not using for an extended time, be sure to remove the battery**
Fluid leakage may cause failure.

Maintenance

- **Do not use chemicals.**
When wiping the main body, do not use benzine, thinner or alcohol, etc.

3 Name of Each Part



4 Preparation before use

[Battery Preparation]

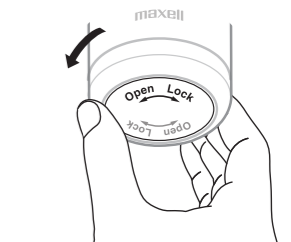
Please prepare 4 new AA size alkaline batteries
※ Maxell alkaline battery recommendations

Caution

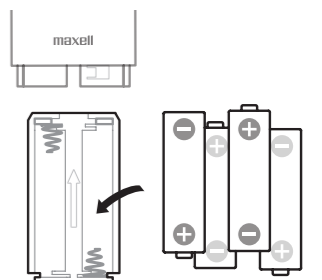
- Be sure to follow all the safety instructions displayed on the batteries.
- Use batteries within the recommended usage date.
- Do not use different types of batteries or mix batteries and old batteries together.

[How to insert batteries]

1. Follow the label on the bottom of the battery cover. Please rotate it in the Open direction and remove.

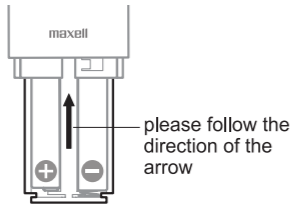


2. Remove the battery holder from the main unit and insert 4 batteries into the holder.



※Insert the batteries with (+)(-) terminals of the batteries in the correct direction according to the instruction on the battery holder.

- Please attach the battery holder to the main unit in the correct direction.



- Please rotate the battery cover in the Lock direction according to the bottom label and install it.



[Battery life]

Continuous operation time: Approx.1 month

※Usage time is approximate. It depends on the environment and usage situation.

[Battery Replacement Indication]

If the main unit LED turns from green to red, or if the LED does not light even if you press the main unit power button, please replace batteries.

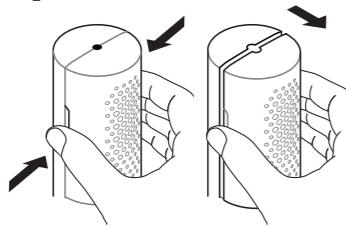
Caution

- Please remove used batteries immediately.
- Keep batteries out of reach of infants.
- Do not charge, disassemble, short, overheat, or put it in a fire.
- Do not contact (+) and (-) terminals of removed batteries with metal etc.

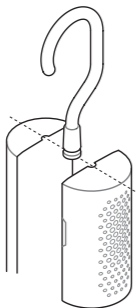
[How to install Attachments]

<Hook Type Attachment>

- Pull the front cover forward while pushing the lock part of the front side cover side and remove it from the main unit.



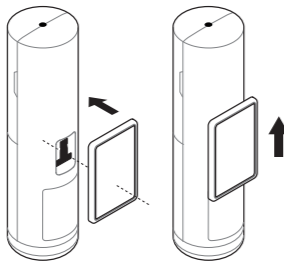
- Insert the supplied hook type attachment in the hole on the top of the main unit and install the front cover until it clicks into position.



※If the front cover and the main unit are not installed correctly, the main unit may not operate.

<Wall Attachment>

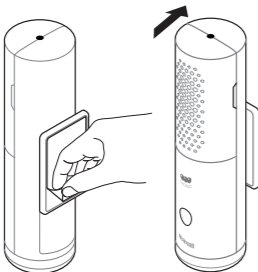
- Insert the wall attachment into the rear slit of the main unit and slide it until it clicks in.



- Remove the protective paper of the double-sided tape on the wall attachment, and affix the wall attachment to the wall.

※Please wipe off dust and dirt on the wall surface to which the wall attachment will be affixed beforehand.

※The double-sided tape of the wall attachment has a strong adhesive force. Hence it will be difficult to peel off once affixed.



5 How To Use

[How to install]

The recommended range of application for this product is approximately 1.3~2.43m²*. Please check the size of the room before installation. Do not use outside the recommended range.

*A general guide based on our test results (effects may vary depending on surrounding environment and operation time).

[LED indication]

Status	LED	Reference
Not operating	Off	—
Operating	On (Green)	When the battery capacity is high
	On (Red)	When the battery capacity is low (Below approx. 20%)

※ The LED lights up for about 10 minutes from the start of operation, after that the LED is turned on once by every 4 minutes and 30 seconds

[How To Operate]

- Long press the power button (about 3 seconds) and the operation will start. The LED will light for about 10 minutes from the start of operation, after that the LED will light every 4 minutes 30 seconds.

※Checking function during operation: When the LED light is off while operating, press the power button for a short time, then the LED will light for about 10 seconds.

- If you press and hold the power button for about 3 seconds during operation, the LED flashes twice and operation stops.

※This product produces a slight hiss sound during operation, however, this is not an abnormal condition. The operation sound may be larger in a humid environment.

※When operation becomes unstable due to contamination on the electrode ring and electrode needle, the operation mode LED goes off and the operation is stopped.

Power Button	Operating Condition	LED
Press and hold (Approx. 3sec)	Stop	Light Off
	Operation Start (Power ON)	Approx.10 mins light on
Short Press	Operation	Flashes once every 4 mins and 30 sec
	Operation Confirmation	Approx.10 sec light on
Press and Hold (Approx. 3sec)		Two flashes
	Not Operation (Power OFF)	Lights off

WARNING

- Do not use the product in a place where a ventilation system is not available.
- Do not use outside the recommended range.

6 Maintenance

[Before Maintenance]

When doing the product maintenance, make sure to remove the battery holder from the device.

[Maintenance for the main body]

Remove contamination using a cloth moistened with neutral detergent and water, and wipe with a soft and dry cloth. Do not use benzene, thinner or alcohol, etc.

[Maintenance for the electrode ring and electrode needle]

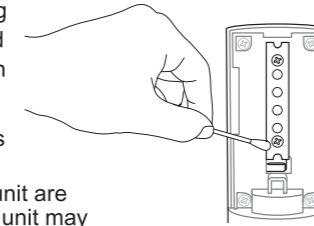
In order to use the product comfortably, maintain for these parts regularly. When operation becomes unstable due to contamination on the electrode plate and electrode needle, the operation mode LED goes off and the operation is stopped. We recommend you maintain for these parts once or twice a month depending on the operating environment.

Caution

- Be careful not to pinch or injure your fingers when removing or installing parts.
- Be careful not to be injured by touching the electrode needle.
- When cleaning the product, do not touch the electrode needle by finger or bend the electrode needle.
- When cleaning the electrode ring, do not damage it.
- Securely install the top cover and electrode ring. Insufficient installation may result in malfunction or failure.

[Maintenance]

- Stop operation, follow the label on the bottom of the battery cover and please rotate it in the Open direction and remove it.
- Remove the battery holder from the product.
- Pull the front cover forward while pushing the lock part of the front cover side and remove it from the main unit.
- Remove any dirt or dust adhering to the electrode plate and electrode needle with a cotton swab or similar.
- Install the front cover until it clicks into position.
※If the front cover and the main unit are not installed correctly, the main unit may not operate.
- Please attach the battery holder to the main unit in the correct direction.
- Please rotate the battery cover in the Lock direction according to the bottom label and install it.



7 Troubleshooting

(If failure is suspected, check the following)

Phenomenon	Cause	Solution
The product does not operate (LED does not light up)	Power is not turned on	Press and Hold button (approx. 3 sec) ⇒ 5 Refer to [How to use]
	The LED light is off during long-term operation.	Press the power button for a short time to check if the LED will light up. ① If it lights up : It is operating normally. ② If it does not light up : Battery is exhausted. Replace the battery. ⇒ 4 Refer to [How to insert batteries]
	Attach the front cover is not installed correctly	Attach the front cover correctly and securely. ⇒ 6 Refer to [Maintenance]
	Battery cover is not installed correctly	Attach battery cover correctly and securely. ⇒ 4 Refer to [How to insert batteries]
	Battery is not inserted correctly into the battery holder	Insert the batteries correctly and securely. ⇒ 4 Refer to [How to insert batteries]
When noise emits from the product	Electrode plate or electrode needle is dirty	Clean electrode plate and electrode needle. ⇒ 6 Refer to [Maintenance]

8 Specification

[Main Body]

Power	: AA x 4pcs size alkaline batteries ※Maxell alkaline battery recommendations
Operating Temperature Range	: 5 ~ 40 °C (no condensation)
Ozone Generation	: Approx. 0.3 mg/hr
Range of application	: 1.296 ~ 2.43m ²
Outside Dimension	: Width 45 × Depth 45 × Height 170mm (excluding protrusions)
Mass	: Approx.130g (not including battery)
Continuous operation time	: Approx.1 month

[Included items]

Hook type attachment × 1, Wall attachment × 1, Instruction manual × 1

※Deodorizing, anti-bacterial and virus elimination effectiveness is described on the following website.

http://www.maxell.jp/consumer/mxap-ar50_01.html

Maxell, Ltd.
30-13 Motoyoyogi-Cho, Shibuya-Ku, Tokyo 151-8527
<http://www.maxell.co.jp>