



Ozone Water Generator MXZW-WM100

PA1354-01

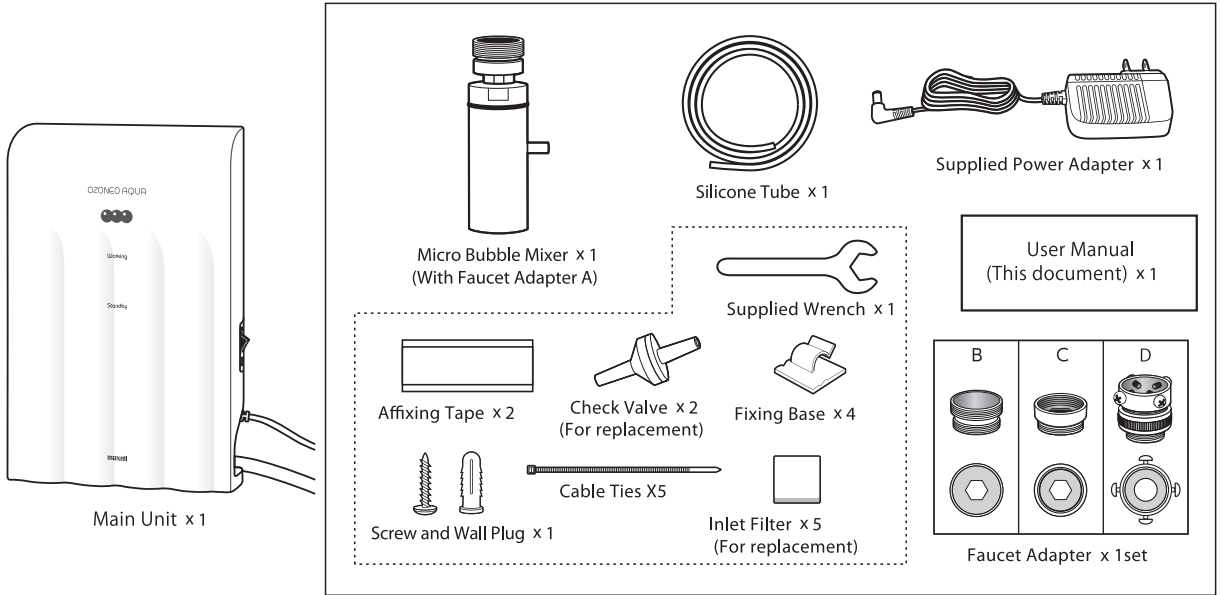
User Manual

Thank you for purchasing the Maxell product. Please carefully read this instruction manual before use and use it correctly.

Contents	Page
1 Introduction	1
2 Safety Precautions	1
3 Part Names	6
4 Preparation Before Use	7
5 How to Use	10
6 Maintenance / Change	11
7 Troubleshooting (When problems arise)	13
8 Specification	13

Confirmation of packaged items

Accessories



1 Introduction

Keep the following in mind when reading the Instruction Manual.

- This Instruction Manual may be subject to change without prior notice.
- In order to improve the product, external appearance or part of the specifications may be subject to change without prior notice.
- Unauthorized duplication of part or all of this Instruction Manual without permission is prohibited except for the case of personal use. In addition, do not reprint this Instruction Manual without permission.

Disclaimer

- We assume no responsibility for any damage caused by fire, earthquake, action by any third party, other accidents, customer's intention or fault, incorrect use, or use under other abnormal conditions.
- We assume no responsibility for any damage caused by any usage not described in this Instruction Manual.
- We assume no responsibility for any damage caused by malfunction due to combination with connection equipment and devices.
- This product is not intended for use with equipment and devices related to human life such as medical equipment and devices, nuclear equipment and devices, aerospace equipment and devices, transportation equipment, and equipment and devices which require a high standard of reliability. We assume no responsibility if this product is used for the control systems of these types of equipment and devices and if any injury or fire occurs due to failure of the product.

2 Safety Precautions

Make sure to observe the following in order to use the product safely.

⚠ WARNING Indicates the degree of danger in which incorrect handling may result in death or serious injury*¹ to a user.

⚠ CAUTION Indicates the degree of danger or the state of damage in which incorrect handling may result in slight injury*² to a user or damage to property*³.

- *1: Serious injury means injury with aftereffects such as loss of sight, burns, electric shock, bone fracture or poisoning and injury which requires hospitalization or long-term hospital visits for medical treatment.
- *2: Slight injury means injury, burns, or electric shock which does not require hospitalization or long-term hospital visits for medical treatment.
- *3: Damage to property means consequential damage related to house, household goods and livestock or pets.

Examples of Symbol		Symbol prohibits an action in handling of the product. Specific prohibited content is shown in or near the symbol by picture or words. (Example: Do Not Disassemble)
		Symbol forces a user to perform an action based on the instruction in handling of the product. Specific content forced is shown in or near the symbol by picture or words. (Example: Disconnect a plug from the outlet.)

WARNING

- Do not use in an area without ventilation.
- Do not use in places where there is soot, flammable gas or metallic dust. It may cause ignition or smoke.
- Please use and keep the product out of reach of children. It may cause electric shock or injury.
- When using the product in an environment with small animals, please take care to ensure the animals' welfare.
- Please note that natural rubber etc. easily deteriorates when in contact with ozone.
- If you are concerned about the odor peculiar to ozone, or if you feel a change in your physical condition such as headaches during use, please discontinue use. Please consult with a doctor.
- If you have an existing medical condition such as asthma, please consult with your doctor before using the product.

WARNING

■ When abnormality/malfunction occurs

- **In case of abnormality or failure, stop using the product immediately and remove the power adapter from the power outlet**
If smoke, unusual odor, abnormal sounds are generated from the main unit, or water or foreign matter enters the inside, immediately stop using and unplug the power adapter. Continued use may cause smoke, heat generation, ignition, electric shock, etc.
- **When the main unit is accidentally dropped into the water, unplug the power adapter from the power outlet**
It may cause electric shock.
*Always request repairs to the dealer where the product was purchased or contact customer service.




- **When the product is dropped or broken, discontinue use immediately**
Continued use may cause heat generation, ignition, electric shock or injury.





■ About the main unit and power adapter

- **Do not repair, remodel or disassemble**
It may cause fire, electric shock or injury.
- **Do not expose the product to water**
Please do not immerse or splash the product with water. It may cause fire, electric shock or short circuit.





• **Do not place the product into fire**
Please do not place it in fire or heat the product. It may cause fire, explosion or injury. 

• **Do not use with wet hands**
It may cause electric shock, malfunction, etc. 

• **Do not place in direct sunlight or where the temperature is abnormally high**
It may cause not only deterioration of the equipment surface and parts, but also heat generation, ignition, explosion or injury. Do not place in direct sunlight or near heating equipment such as heaters. 

■ About installation and use

• **Do not use in an area without ventilation**
It may cause physical harm. 
• **Do not use in places where there is soot, flammable gas or metallic dust.**
It may cause ignition or heat generation.


• **Do not use in humid environment**
Please do not use in bathroom, by the sea, or near a body of water. Also, please be careful to use in a room that uses a humidifier excessively. It may cause electric shock or ignition. 
Keep Dry

• **Do not install the product in places subject to water**
It may cause electric shock or ignition.

• **Do not use as drinking water** 
• **Do not apply to a wound**

• **Consult with a doctor / veterinarian if using for a living thing such as a pet** 

■ About the main unit


• **Do not use any power source other than the supplied power adapter**
Please use the power adapter supplied with the product. Using any other power adapter may cause smoke, heat generation, ignition, malfunction, electric shock or injury. 

• **Do not place in the refrigerator**
It may cause malfunction.

• **Do not place in cooking equipment such as a microwave oven or high-pressure container.**
It may cause smoke, heat generation or ignition.

• **Use and keep the product out of reach of infants and pets.** 
It may cause electric shock or injury.

■ About the power adapter

• **Do not use other than the supplied power adapter.**
Using any other power adapter may cause smoke, heat generation, ignition, malfunction, electric shock or injury. 

- **Do not use other than the specified voltage**

It may cause electric shock or ignition. The input voltage of the power adapter of this product is AC100-240V.

- **Do not use loose power outlets**

When the power adapter is plugged in, please do not use the outlet if it is loose. It may cause electric shock or ignition.

- **Do not cover the power adapter with a cloth or cover**

Generated heat can be trapped and deform the case, causing electric shock or ignition.



- **Do not use a power adapter with a scratch or damage**

It may cause electric shock or ignition.

- **Insert the power adapter securely to the base of the power outlet**

It may cause smoke, heat generation, ignition, malfunction, electric shock or injury.



■ Care of the products

- **When caring for the product, be sure to remove the Micro Bubble Mixer from the faucet while the faucet is closed.**

Failure to do so may cause injury or malfunction.

- **When caring for the product, be sure to unplug the power adapter**

Failure to do so may cause electric shock or ignition.

- **Remove dust from the power adapter on a regular basis.**

Please remove dust from the power adapter on a regular basis. Insulation failure may result due to moisture etc. and may cause fire.

- **When the product is not used for a long period of time, be sure to unplug the power adapter.**

Failure to do so may cause electric shock, short-circuit fire due to insulation deterioration.



⚠ CAUTION

■ About installation and use

- **Do not place the product in an unstable place**

Please do not place the product on a wobbly table or a tilted place. Dropping or falling may cause injury or malfunction.

- **Do not place in a humid or dusty places**

Do not place the product in a bathroom, near a humidifier, or other places that are dusty. It may cause electric shock or malfunction.

- **Do not place in direct sunlight or where the temperature is abnormally high.**

It may cause not only deterioration of the equipment surface and parts, but also heat generation or ignition.



Do not place in direct sunlight or near heating equipment such as heaters.

- **Do not use supply water above 60°C**

It may cause burns or malfunction.

- **Do not install on a faucet dedicated for hot water**

It may cause malfunction.

-
- **If you feel abnormality with the body using ozone water, discontinue use immediately and consult with a doctor**



-
- **Do not use well water that contains salt such as seawater (well water near the sea)**



It may cause malfunction.

-
- **Securely fixing the product when using it while it is mounted on a wall**

Please securely fix the product when using it while it is mounted on a wall, so that it does not fall.

Failure to do so may cause injury or malfunction.



-
- **Do not use more than 2 units in the same sink**

It may cause physical injury.



-
- **If dew condensation occurs on this product, do not turn on the power**

Due to a sudden change of environmental temperature, condensation may occur inside the main unit. If condensation occurs, leave it for a while without turning on the power.



-
- **If the product is not used for a long period of time (one week or more), be sure to unplug the power adapter from the power outlet**

Failure to do so may cause electric shock or malfunction.



■ Micro Bubble Mixer

-
- **Install correctly on the faucet**

Failure to do so may cause water leakage or malfunction.



-
- **Do not put foreign matter (metal etc.) in the water outlet**

It may cause injury or malfunction.

-
- **Do not cover the water outlet with your hands or other objects**

It may cause injury or malfunction.



-
- **Keep out fingers and other objects to avoid getting caught with the angle adjuster when in use**

Failure to do so may cause injury or malfunction.

■ Caring for the product

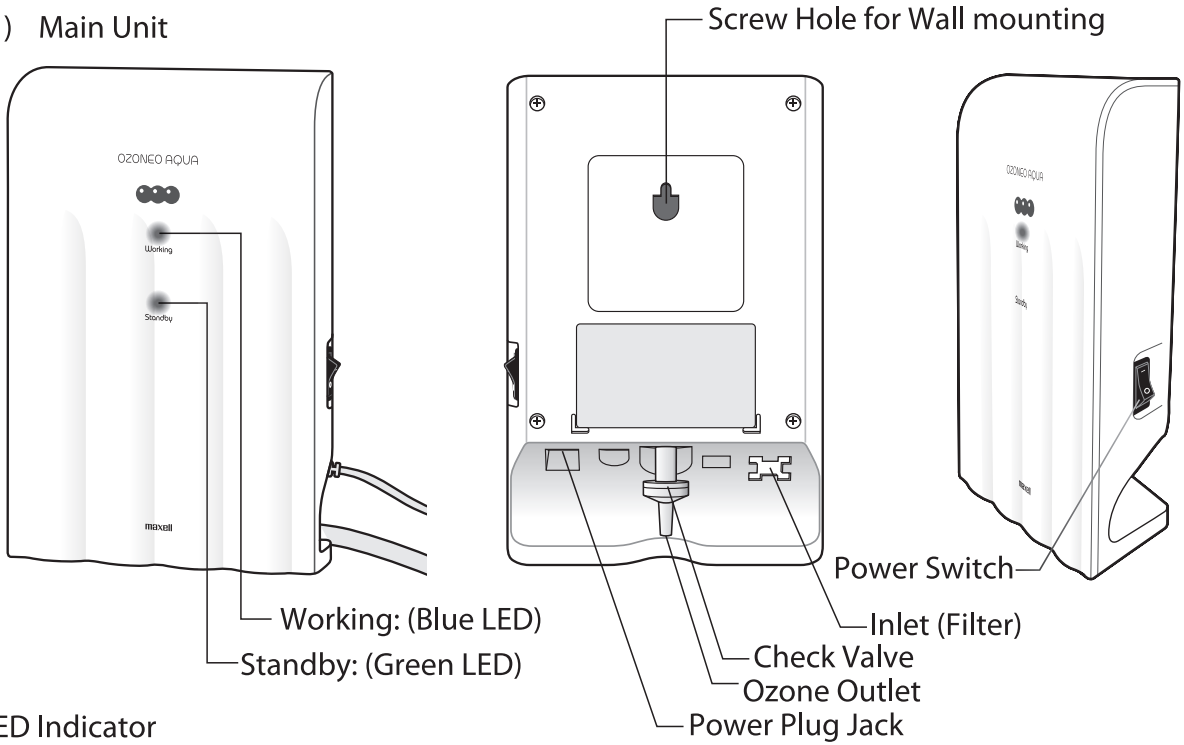
-
- **Do not use chemicals**

Please do not wipe the main unit with benzene, thinner, alcohol etc.



3 Part Names

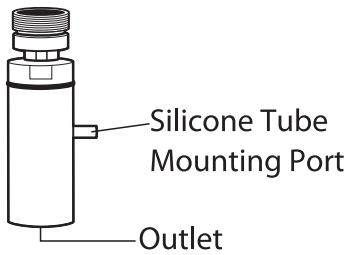
(1) Main Unit



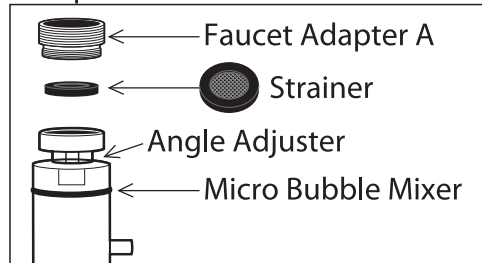
LED Indicator

1. Blue LED ON: Working (Generating Ozone Water)
2. Green LED ON: Standby

(2) Micro Bubble Mixer



Composition



(3) Power Adapter

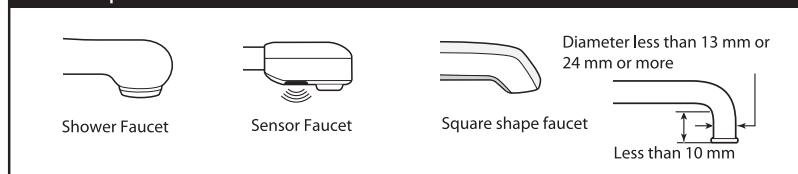


4 Preparation Before Use

Verifying faucet to use

Correspondence for assembling	①	②	③	④	⑤
Faucet Examples	For female thread 		For male thread 		Diameter 13 mm or more and less than 24 mm
Faucet Size	M24×1 (TOTO, KAKUDAI, GROHE etc.)	W23×20 (KVK etc.)	M22×1 (GROHE, MOEN etc.)	W22×20 (TOTO, INAX, KVK etc.)	—
Faucet Shape	Shape A	Shape B	—	Shape C	Shape D
	 Adapter for shape A is attached to the Micro Bubble Mixer.	 Without faucet adapter (Attach the Micro Bubble Mixer without faucet adapter)		 Without faucet adapter (Attach the Micro Bubble Mixer without faucet adapter)	

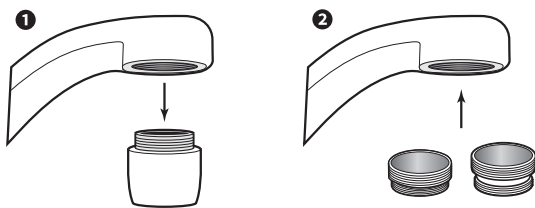
The shapes of faucets that cannot be used.



① Remove the faucet with the water main closed and check whether the faucet adapter can be attached.

② Attach the faucet adapter that can be installed to the faucet.

(Example: female thread faucet)



Installation of Micro Bubble Mixer

① Attach the Micro Bubble Mixer to the faucet adapter.

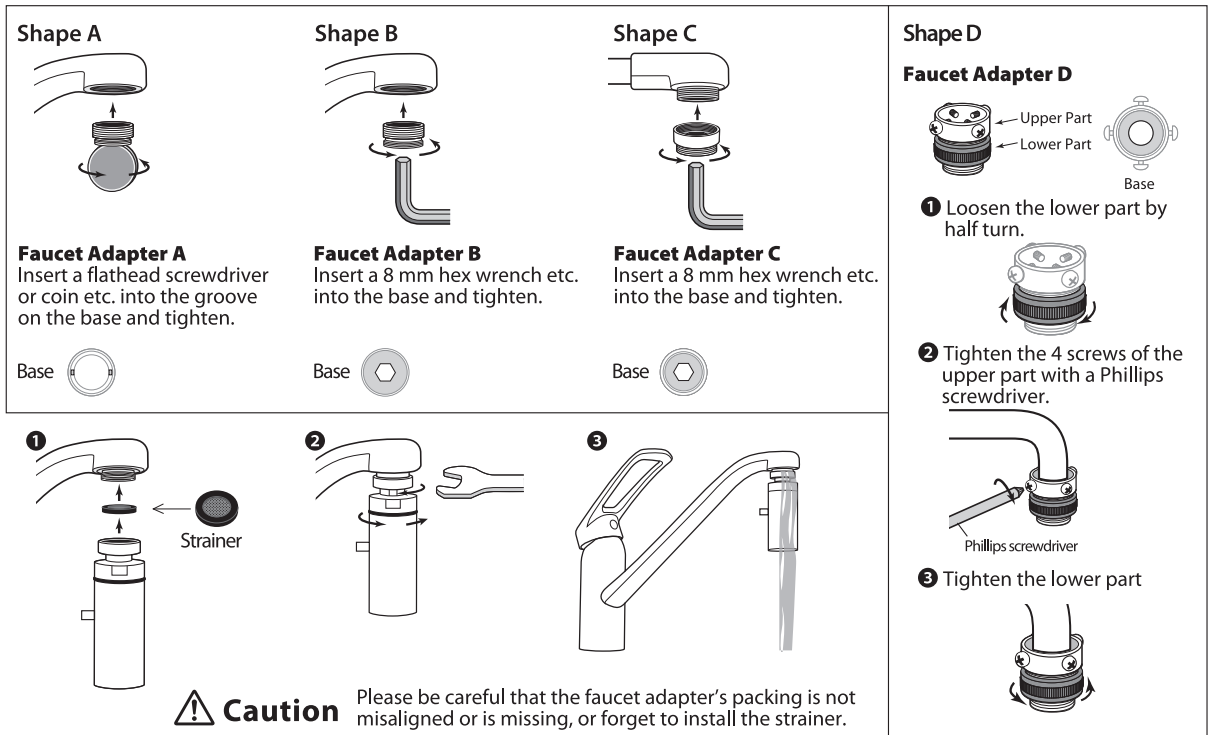
Please make sure that there is a strainer and attach it to the faucet adapter.

② Please install the Micro Bubble Mixer using the supplied wrench.

③ Check for water leakage from the faucet or Micro Bubble Mixer connection.

* If water leaks from the connecting part, tighten the connecting part until there is no water leak.

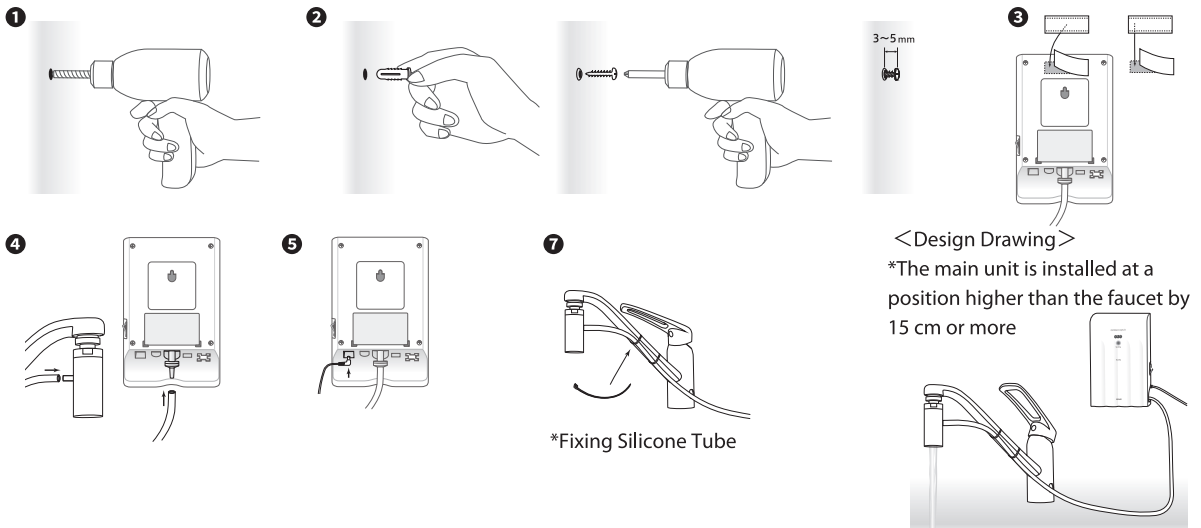
※ If the strainer is not installed, water will leak, so please ensure that the strainer is installed



Installation of Main Unit

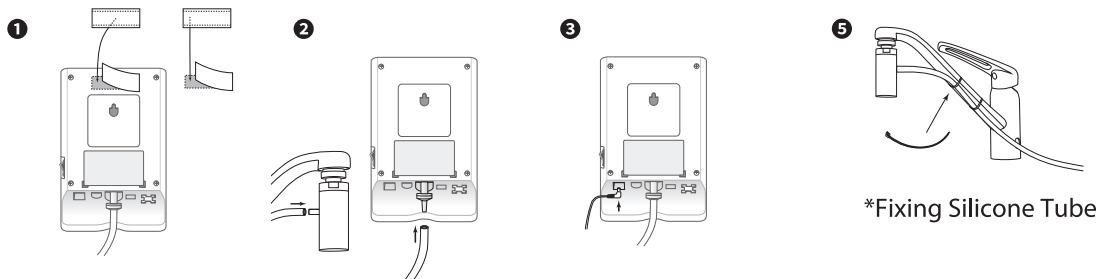
Wall Mounting

- Drill a hole for the wall plug on the wall using a drill etc.
- Insert the wall plug in the hole on the wall and fix the screw.
 * In doing so, please do not tighten the screw fully, leave the screw head roughly 3-5mm.
- Attach the affixing tape on the wall and the back of the main unit.
- Attach the silicone tube to the ozone outlet and the Micro Bubble Mixer.
- Plug in the power adapter into the jack for the main unit power plug and plug the power adapter into an outlet.
- Hook the main unit on the screw of the wall and fix with the affixing tape.
- Fix the silicone tube using the cable ties and fixing base.
- Plug the power adapter into a power outlet.
 * Please install the main unit vertically and level so as not to become tilted.
 * To prevent water backflow, please install the main unit in a position higher than the faucet by 15 cm or more.
 * Please pay attention to ensure pulling, bending, pinching, and collapsing of the silicone tube when fixing does not occur.
 * When mounted on a wall, depending on the type of the wall, it may not be installed with the attached screws. If the strength cannot be secured sufficiently with the attached screws, such as plasterboard or thin veneer board, please purchase commercially available dedicated metal fittings (hanging tools suitable for each wall material).



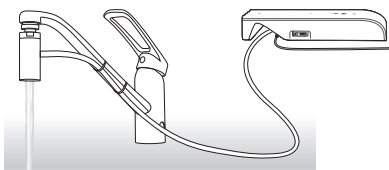
Horizontal Installation

- ① Attach the affixing tape on the installation location and the back of the main unit.
- ② Attach the silicone tube to the ozone outlet and the Micro Bubble Mixer.
- ③ Plug in the power adapter into the jack for the main unit power plug and plug in the power adapter into a power outlet.
- ④ Install the main unit and fix with the affixing tape.
- ⑤ Fix the silicone tube using the cable ties and the fixing base.
 - * Please install the main unit horizontally so as not to be misaligned.
 - * To prevent water backflow, please install the main unit in a position higher than the faucet by 15 cm or more.
 - * Please pay attention to ensure pulling bending, pinching, and collapsing of the silicone tube when fixing. Does not occur.



<Design Drawing>

* The main unit is installed at a position higher than the faucet by 15 cm or more.



⚠ Caution

- Do not use any other faucet adapter.
- Install the main unit at a position higher than the faucet by 15cm or more.
- Please pay attention to ensure pulling and bending of the silicone tube when fixing does not occur.
- Do not place heavy objects on the silicone tube.
- Fix the main unit so as not to fall over or drop.

5 How to Use

Operation Method

1. When using ozone water

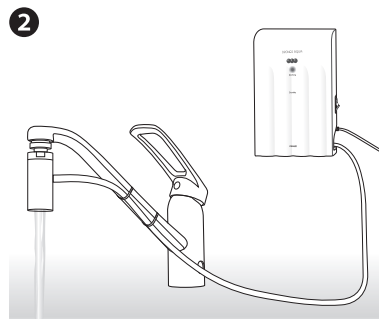
- 1 When the power switch is turned on, Standby (Green LED) will light up.
- 2 Open the faucet and run the water.
Working (Blue LED) will light up and generate ozone water when the flow rate becomes the default amount.
Working (Blue LED) will flash after operating continuously for about 10 minutes.
(Water coming out in this state is not ozone water.)
Working (Blue LED) will not light up and remain off when the flow rate is less than the default flow rate (approx. 4L/min)
- 3 Close the faucet and stop the water. (Blue LED is off)
- 4 Turn off the power switch in order to turn off the power. (Standby (Green LED) will be turned off.)
*For continuous use, repeat 2 ~ 3.

2. When using tap water

- 1 Turn off the power of the main unit.
- 2 Open the faucet and run the water.

⚠ Warning

- Do not use in a place without ventilation.
- Do not use as drinking water.
- Do not apply to wound.
- When using tap water, please turn off the power of the main unit.

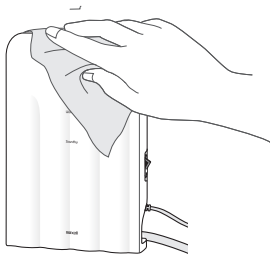


6 Maintenance/ Change

1. Care instructions

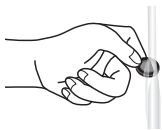
• Maintenance procedure for the Main Unit

- 1 Turn off the power and unplug the power adapter from the power outlet.
- 2 Please remove the main unit from the installation location.
- 3 Unplug the power adapter plug from the power plug jack on the main unit.
- 4 Remove the silicone tube from the ozone outlet.
- 5 Please clean the removed main unit with a neutral detergent or cloth containing water and wipe with a soft, dry cloth.
- 6 Please attach a silicone tube to the ozone discharge port.
- 7 Plug the power adapter plug into the power plug jack.
- 8 Install the main unit in its original location, plug it in to the power outlet and use.



• Micro Bubble Mixer Care instructions

- 1 Turn off the power and unplug the power adapter from the outlet.
- 2 Remove the silicone tube from the Micro Bubble Mixer.
- 3 Remove the Micro Bubble Mixer from the faucet or faucet adapter.
- 4 Remove the strainer from the Micro Bubble Mixer and wash it with water.



- 5 Please wash the outlet of the Micro Bubble Mixer.



- 6 Please attach the strainer to the faucet or faucet adapter with the strainer in the Micro Bubble Mixer.
- 7 Please attach the silicone tube to the Micro Bubble Mixer.
- 8 Plug the power adapter into a power outlet and use.

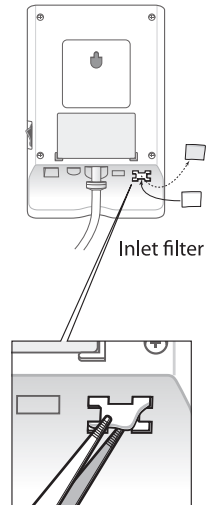
⚠ Caution

- When caring, always turn off the power, please remove the power adapter from the outlet.
- Do not use benzene, thinner, alcohol, etc. when cleaning the main body.
- Please wash the outlet of the Micro Bubble Mixer and the strainer periodically.
- Misplacement of the strainer, insufficient tightening of the Micro Bubble Mixer will cause water leakage, please install correctly.

2.Replacement Method

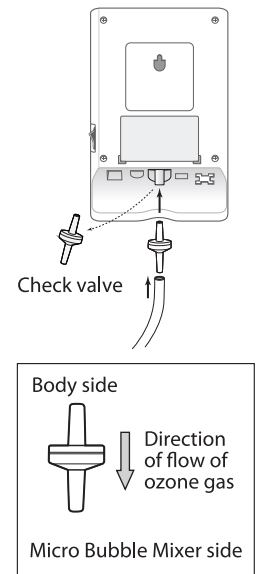
• Inlet filter replacement procedure

- 1 Turn off the power and unplug the power adapter from the outlet.
- 2 Please remove the main unit from the installation location.
- 3 Unplug the power adapter plug from the power plug jack on the main unit.
- 4 Remove the silicone tube from the ozone outlet.
- 5 Remove the inlet filter from the inlet of the unit.
- 6 Please install a new inlet filter.
 - ※ Please ensure that the inlet filter is hooked in the securing claw.
- 7 Please attach a silicone tube to the ozone outlet.
- 8 Please attach the power adapter plug to the power plug jack of the main unit.
- 9 Install the main unit in its original location, plug it in to the power outlet and use.
 - ※ Please replace the inlet filter once every 6 months. Depending on the operating environment, if the air inlet filter is visibly dirty, we recommend that you replace it early.



• Check valve replacement procedure

- 1 Turn off the power and unplug the power adapter from the outlet.
- 2 Please remove the main unit from the installation place.
- 3 Unplug the power adapter plug from the power plug jack on the main unit.
- 4 Remove the Silicone tube from the ozone outlet.
- 5 Remove the main check valve.
- 6 Please ensure the new check valve is fitted in the correct direction and install it.
- 7 Please attach the silicone tube to the ozone outlet (check valve).
- 8 Please attach the power adapter plug to the power plug jack of the main unit.
- 9 Install the main unit in its original location, and plug it in to the power outlet and use.
 - ※ Please replace the check valve once every 12 months. Since there is an installation direction in the check valve, please pay attention to the orientation when installing.



⚠ Caution

- Be sure to turn off the power before removing the power adapter from the outlet.
- When attaching or detaching the main unit or Micro Bubble Mixer, make sure not to drop the main unit, pinch your finger, or cause any other injury.
- Install the inlet filter firmly.
- Check the direction of the check valve and securely install it.
- Please ensure to avoid insufficient insertion of silicone tubing, pulling, bending, pinching, or collapsing of the silicone tube.

7 Troubleshooting (When problems arise)

Phenomenon	Cause	How to remedy
Green LED does not light up. (Standby)	The power is not turned on.	Turn on the power switch ⇒ 5 For how to use, see "How to operate".
	The power adapter is disconnected from the power outlet.	Plug the power adapter into a power outlet. ⇒ 4 For preparation before use see "Main unit installation".
	Power adapter plug is disconnected from the main unit power jack.	Plug the power adapter plug into the power plug jack on the main unit. ⇒ 4 For preparation before use, see "Main unit installation".
Blue LED does not light up. (Working)	Water leaks from the Micro Bubble Mixer and faucet adapter.	Attach the faucet adapter correctly and securely. ⇒ 4 For preparation before use, see "Confirmation of faucet to use" and "Installation of Micro Bubble Mixer"
	The Silicone tube is bent, pulled, or dislodged.	Correctly install the Silicone tube securely. ⇒ 4 For preparation before use, see "Main unit installation".
	The Silicone tube has a hole in it or is clogged.	Replace the Silicone tube ⇒ 4 For preparation before use, see "Main unit installation".
	Low flow rate	Open the faucet and increase the flow rate. ⇒ 5 For how to operate, see "Operation method".

8 Specification

Main Unit

Rated voltage	Supplied Power Adapter, Input 100-240V/50-60Hz, Output DC12V, 1A
Operating Temperature	5~40°C
Ozone generation amount	Max. 100mg/h
External Dimensions	W125xD46xH189mm (excluding protrusions)
Weight	Main Unit Approx. 400 g

Accessories

Micro Bubble Mixer × 1pc, Supplied Wrench × 1pc, Supplied Power Adapter × 1pc, Silicone tube × 1pc (approx. 150 cm), Instruction Manual × 1pc, Faucet Adapter × 1 set, Check Valve × 2pcs, Screw/Wall Plug × 1pc each, Inlet Filter × 5pcs, Cable Ties × 5pcs, Fixing Base × 4pcs, Affixing Tape × 2 pairs

Maxell, Ltd.

30-13 Motoyoyogi-Cho, Shibuya-Ku, Tokyo 151-8527

<http://www.maxell.co.jp>